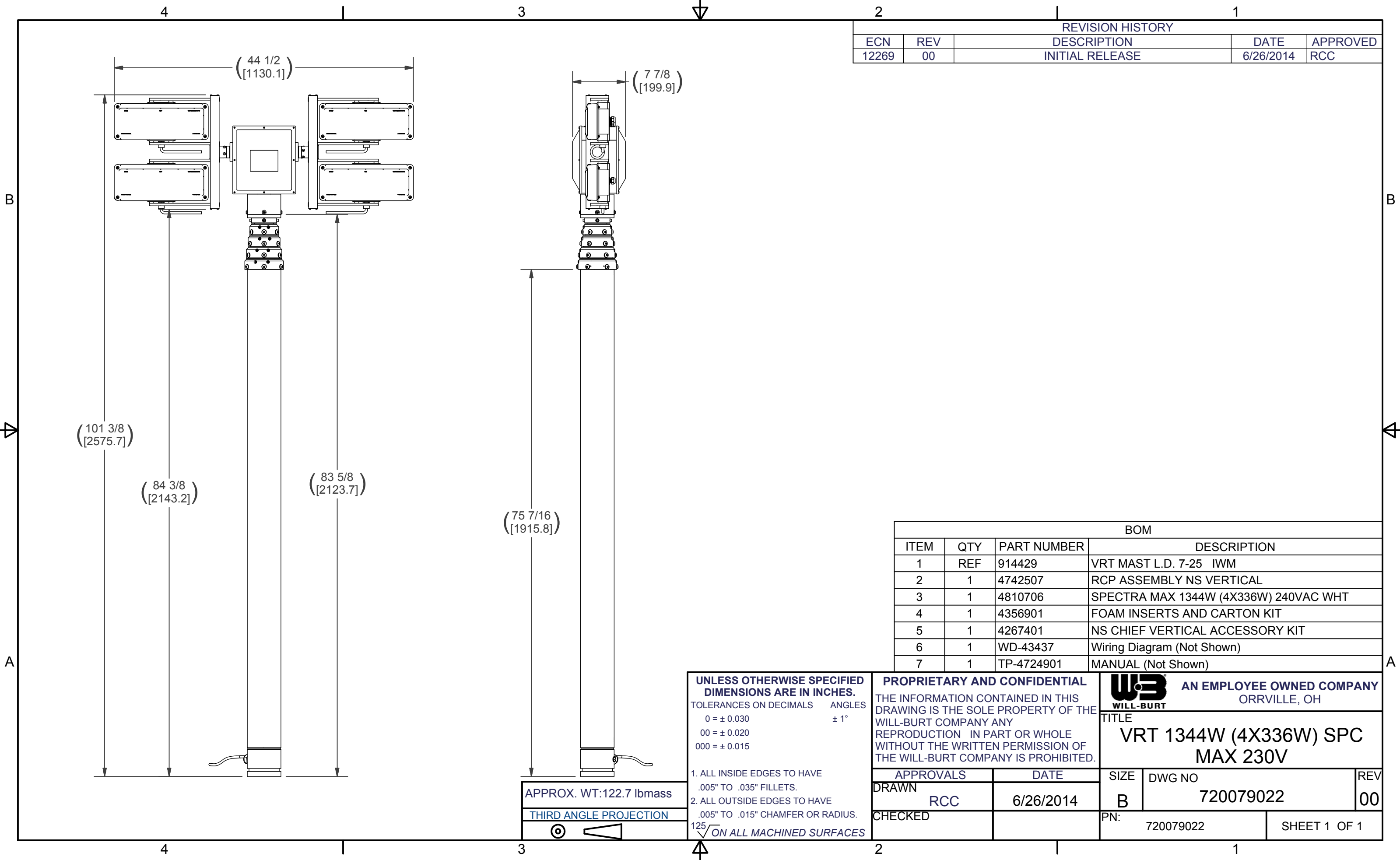


REVISION HISTORY				
ECN	REV	DESCRIPTION	DATE	APPROVED
12269	00	INITIAL RELEASE	6/26/2014	RCC



BOM			
ITEM	QTY	PART NUMBER	DESCRIPTION
1	REF	914429	VRT MAST L.D. 7-25 IWM
2	1	4742507	RCP ASSEMBLY NS VERTICAL
3	1	4810706	SPECTRA MAX 1344W (4X336W) 240VAC WHT
4	1	4356901	FOAM INSERTS AND CARTON KIT
5	1	4267401	NS CHIEF VERTICAL ACCESSORY KIT
6	1	WD-43437	Wiring Diagram (Not Shown)
7	1	TP-4724901	MANUAL (Not Shown)

UNLESS OTHERWISE SPECIFIED DIMENSIONS ARE IN INCHES.
TOLERANCES ON DECIMALS ANGLES
0 = ± 0.030 ± 1°
00 = ± 0.020
000 = ± 0.015

1. ALL INSIDE EDGES TO HAVE .005" TO .035" FILLETS.
2. ALL OUTSIDE EDGES TO HAVE .005" TO .015" CHAMFER OR RADIUS.
125 $\sqrt{\quad}$ ON ALL MACHINED SURFACES

PROPRIETARY AND CONFIDENTIAL
THE INFORMATION CONTAINED IN THIS DRAWING IS THE SOLE PROPERTY OF THE WILL-BURT COMPANY ANY REPRODUCTION IN PART OR WHOLE WITHOUT THE WRITTEN PERMISSION OF THE WILL-BURT COMPANY IS PROHIBITED.

WILL-BURT AN EMPLOYEE OWNED COMPANY
ORRVILLE, OH

TITLE
VRT 1344W (4X336W) SPC MAX 230V

APPROVALS	DATE	SIZE	DWG NO	REV
DRAWN RCC	6/26/2014	B	720079022	00
CHECKED		PN:	720079022	SHEET 1 OF 1

APPROX. WT:122.7 lbmass

THIRD ANGLE PROJECTION

