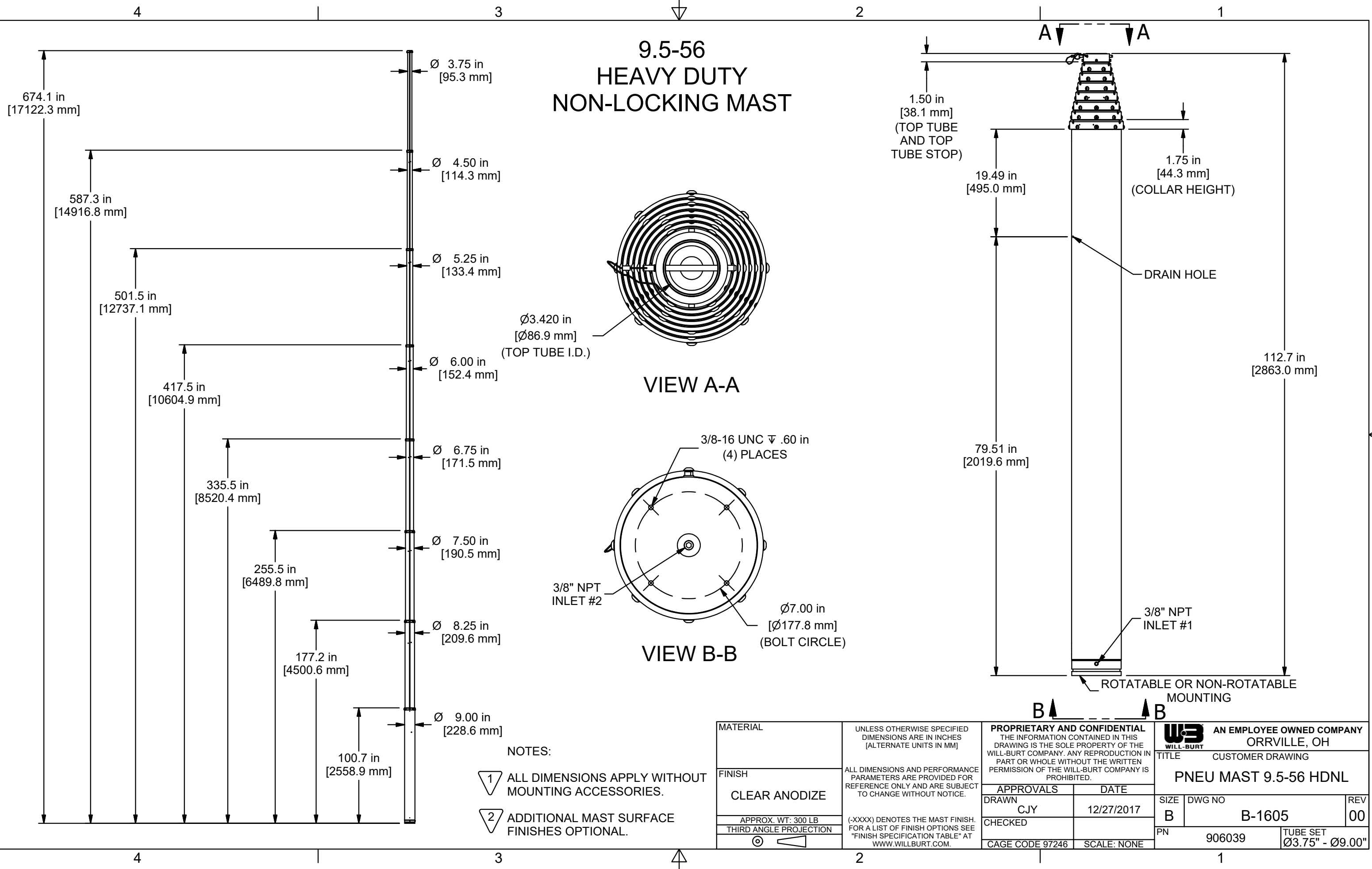



# 9.5-56 HEAVY DUTY NON-LOCKING MAST



- NOTES:
- 1 ALL DIMENSIONS APPLY WITHOUT MOUNTING ACCESSORIES.
  - 2 ADDITIONAL MAST SURFACE FINISHES OPTIONAL.

MATERIAL	UNLESS OTHERWISE SPECIFIED DIMENSIONS ARE IN INCHES [ALTERNATE UNITS IN MM]	<b>PROPRIETARY AND CONFIDENTIAL</b> THE INFORMATION CONTAINED IN THIS DRAWING IS THE SOLE PROPERTY OF THE WILL-BURT COMPANY. ANY REPRODUCTION IN PART OR WHOLE WITHOUT THE WRITTEN PERMISSION OF THE WILL-BURT COMPANY IS PROHIBITED.		 <b>AN EMPLOYEE OWNED COMPANY</b> ORRVILLE, OH	
FINISH	ALL DIMENSIONS AND PERFORMANCE PARAMETERS ARE PROVIDED FOR REFERENCE ONLY AND ARE SUBJECT TO CHANGE WITHOUT NOTICE.	APPROVALS DRAWN C J Y CHECKED CAGE CODE 97246		TITLE CUSTOMER DRAWING <b>PNEU MAST 9.5-56 HDNL</b>	
APPROX. WT: 300 LB	(-XXXX) DENOTES THE MAST FINISH. FOR A LIST OF FINISH OPTIONS SEE "FINISH SPECIFICATION TABLE" AT WWW.WILLBURT.COM.	DATE 12/27/2017		SIZE	REV
THIRD ANGLE PROJECTION		SCALE: NONE		B	00
				DWG NO	
				B-1605	
				PN	
				906039	
				TUBE SET	
				Ø3.75" - Ø9.00"	