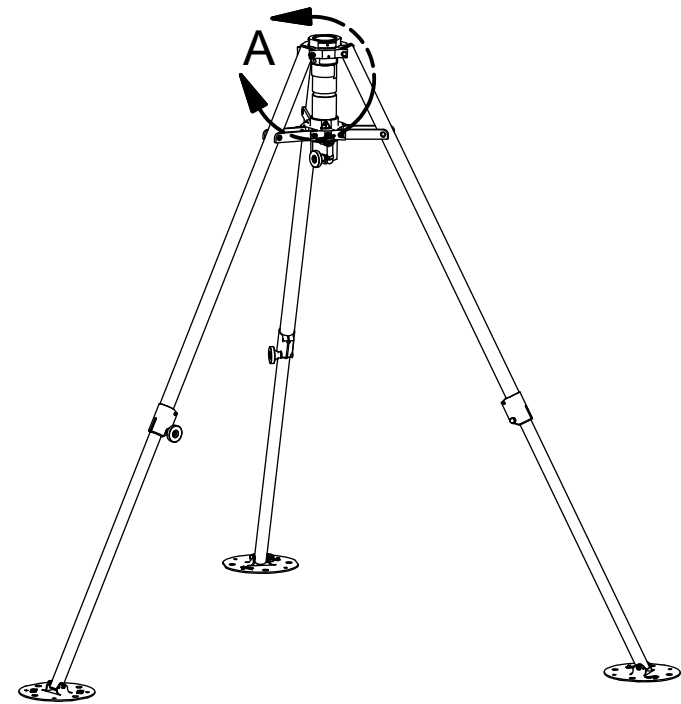
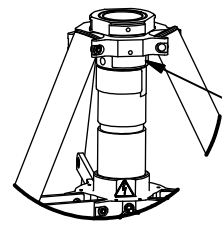


REVISION HISTORY				
ECN	REV	DESCRIPTION	DATE	BY/APPR
12275	00	INITIAL RELEASE	7/1/2014	KV/



TRIPOD



LABEL - SERIAL NUMBER
EVENLY PLACED
ON THIS CENTRAL TUBE

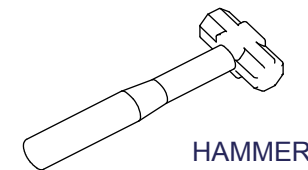
DETAIL A



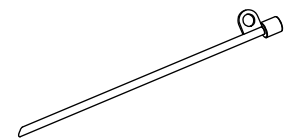
MANUAL LIFT



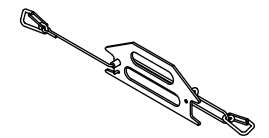
STAKE PULLER



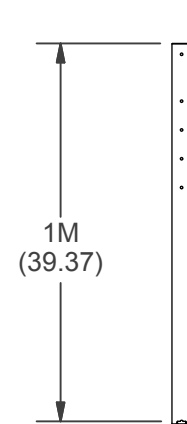
HAMMER



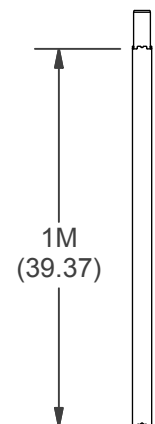
GUY STAKE



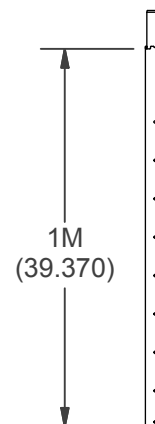
ROPE STAY



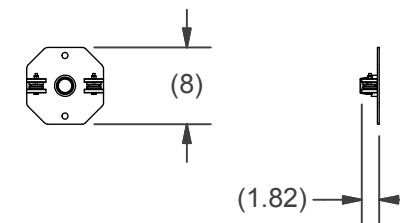
TOP TUBE



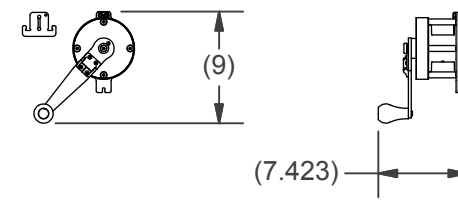
TUBE SECTION



BASE TUBE



LIFT BASE PLATE ASSEMBLY



LIFT WINCH ASSEMBLY



STANDARD 4-WAY GUY COLLAR
(P/N: 5009501)
(SALES LINE ITEM
FOR CUSTOM PLATFORM)

MANUAL NOT SHOWN

BAG NOT SHOWN
(SHEET 2 OF 3)

MATERIAL	-	UNLESS OTHERWISE SPECIFIED DIMENSIONS ARE IN INCHES.
FINISH	-	TOLERANCES ON DECIMALS ANGLES 0 = ± 0.030 ± 1/2° 00 = ± 0.015 000 = ± 0.005
APPROX. WT:	- LB	FRACTIONAL ± 1/64"
THIRD ANGLE PROJECTION		
125 ON ALL MACHINED SURFACES		

PROPRIETARY AND CONFIDENTIAL
THE INFORMATION CONTAINED IN THIS
DRAWING IS THE SOLE PROPERTY OF THE
WILL-BURT COMPANY ANY REPRODUCTION
IN PART OR WHOLE WITHOUT THE WRITTEN
PERMISSION OF THE WILL-BURT COMPANY IS
PROHIBITED.

WB AN EMPLOYEE OWNED COMPANY
WILL-BURT ORRVILLE, OH

TITLE
**ANTENNA MAST LIFT SYSTEM
ALUM. NOTCH TUBE SET**

APPROVALS	DATE
DRAWN kvandegrift	6/16/2014
CHECKED	

SIZE	DWG NO	REV
B	715070000	00
PN: SEE CHART		SHEET 1 OF 3