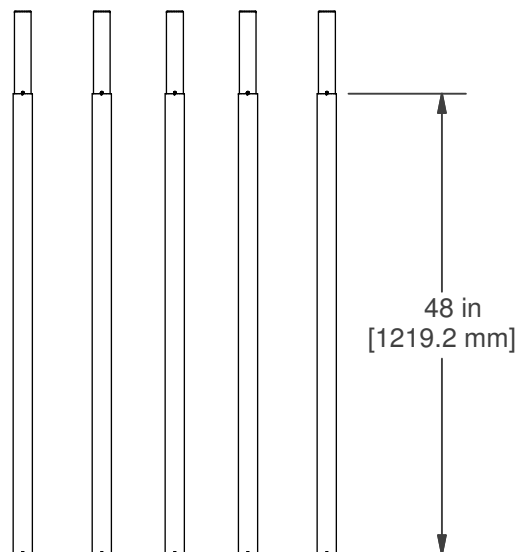
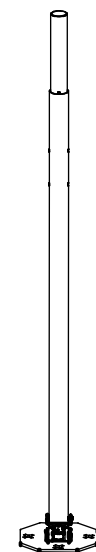


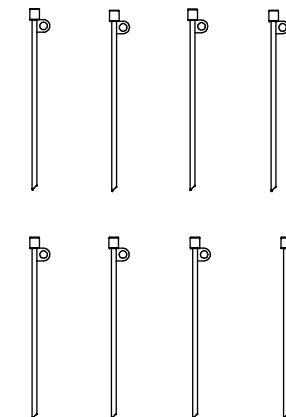
TRIPOD  
P/N:4110701



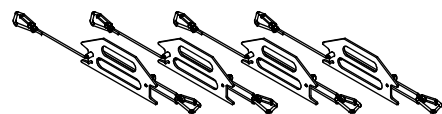
QTY. (5) CF TUBE SECTION  
P/N: 4112201



BASE TUBE S/A  
P/N: 4164801



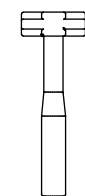
QTY. (8) GUY STAKES  
P/N:4109901



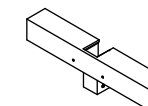
QTY. (4) ROPE STAYS  
P/N: 4247805



QTY. (3) BASE PLATE  
P/N: 4111201



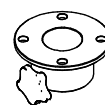
HAMMER  
P/N: 4128101



STEP  
P/N: 4132101




BAG  
P/N: 4126701



GUY COLLAR  
4-WAY  
P/N: 4383301



USER MANUAL  
P/N: 4131101

|   |     |   |              |
|---|-----|---|--------------|
|  |     | AN EMPLOYEE OWNED COMPANY<br>ORRVILLE, OH |              |
| TITLE<br><b>TWR CF 24FT BLK</b>   |     |   |              |
| SIZE  | PN: | <b>714012400</b>                          | REV<br>00    |
|   |     |   | SHEET 1 OF 1 |