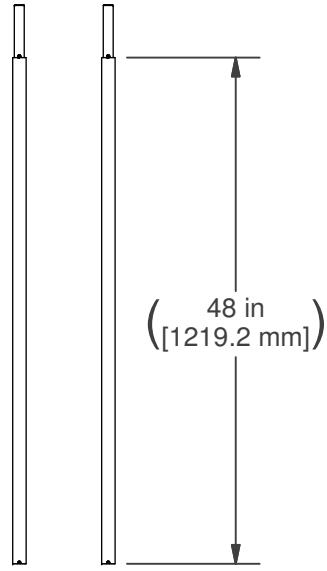
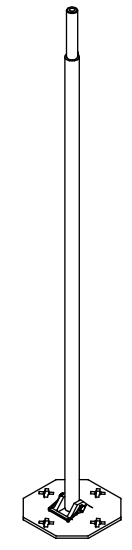


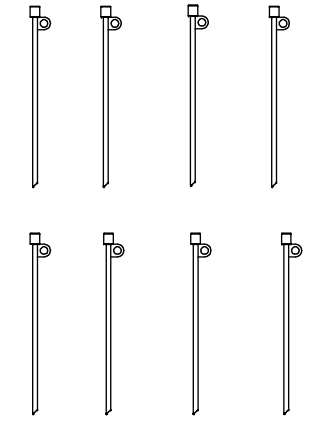
TRIPOD
P/N:4131501



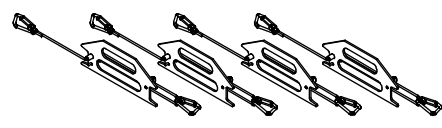
QT'Y. (2) CF TUBE SECTION
P/N: 4132801



BASE TUBE S/A
P/N: 4164901



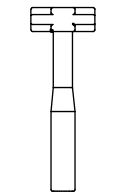
QT'Y. (8) GUY STAKES
P/N:4109901



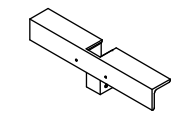
QT'Y. (4) ROPE STAYS
P/N: 4247805



QT'Y. (3) BASE PLATE
P/N: 4111201



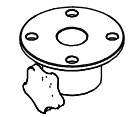
HAMMER
P/N: 4128101



STEP
P/N: 4132101




BAG
P/N: 4113001



GUY COLLAR
4-WAY
P/N: 4383501



USER MANUAL
P/N: 4131101

| | | | |
|---|-----|---|--------------|
|  | | AN EMPLOYEE OWNED COMPANY ORRVILLE, OH | |
| TITLE MM CF 12FT BLK | | | |
| SIZE | PN: | 714401200 | REV 00 |
| | | | SHEET 1 OF 1 |